



COMPACT ECONOMICAL THERMAL SOLUTIONS



CX Series Printers

The desktop CX thermal printers are ideal for a range of low-volume applications, including:

-  **Manufacturing**
-  **Shipping/Receiving**
-  **Asset Tracking**
-  **Compliance Labeling**
-  **Retail**
-  **Healthcare**

Economical Solution

The CX Series offers a low-cost printing solution for low-volume applications. Speed of 4 inches-per-second and feature-rich design will satisfy a wide spectrum of requirements.

Compact Design

Designed for convenience, the CX Series offers compact design for real-estate-sensitive applications. It offers many advanced features, simplifying loading and operation.

Media Capacity

The CX Series is designed to accommodate a full 5" OD roll of media, reducing downtime and simplifying operation.

Performs best with
Techno
T H E R M
Labels & Ribbons



THE BEST PERFORMING
COMPACT

SPECIFICATIONS

CX400/410



Out of the box ... and ready to go!

Complete with:

- Labeling Software
- Parallel Printer Cable
- Starter Roll of Media & Ribbon
- Power Supply
- User's & Programmer's Guide



Printing Method	Thermal Transfer/Direct Thermal	
Print Resolution	203 dpi (8 dpmm)	305 dpi (12 dpmm)
Print Speed	4 ips (100 mm/second)	3 ips (75 mm/second)
Media Width	Max. 4.69" (119 mm) /Min 0.87" (22 mm)	
Max. Print Width	4.1" (104 mm)	4.25" (106 mm)
Min. Print Length	0.87" (22 mm)	
Max. Print Length	50" (1270 mm)	25" (635 mm)
Max. Ribbon Size	4.4" (110 mm) W x 328 ft. (100 m) L; Face-Out	
Dimensions	7.76" W x 10.2" D x 6.5" H (197 mm W x 257 mm D x 164 mm H)	
Weight	8.09 lbs (3.67 kg)	

Memory:

2 MB DRAM
2 MB Flash ROM
4 MB or 6 MB Optional Flash

Processor:

32-BIT

Media:

Roll-fed or fan-fold, die-cut or continuous direct thermal or thermal transfer labels, synthetics, and tag stock with or without black mark, gap, or notch.

Max. Caliper: 0.01" (0.254 mm)
Max. Roll Diameter: 5" (127 mm)
Core Diameter: 1.5" (38 mm)
Wind: Face-In

Ribbon:

Max. Roll Diameter: 1.41" (36 mm)
Min. Core Diameter: 0.75" (19 mm)
Wind: Face-Out

Sensing:

Adjustable transmissive sensor for gap.
Reflective sensor for black mark. Automatic, programmable setting of top of form. Label present sensor - optional with label dispenser. Ribbon-out sensor

Interface:

- Serial RS232 (up to 38.4k bps)
- Centronics Parallel

Barcode Symbolologies:

Elementary: UPC-A, UPC-E, EAN-8, EAN-13, Code 39, Code 93, Code 128, Codabar, MSI, Bookland, Industrial 2/5, Interleaved 2/5, Matrix 2/5, Postnet, UCC/EAN 128
2-Dimensional: PDF417, Maxicode

Fonts:

Bitmap - 12 proportional, mono-spaced and outline fonts (Code table 858).

Barcode & Font Formatting:

360° rotation of barcodes and text, character expansion horizontally and vertically, sequential numbering, form overlay for high-speed editing of complex formats.

Graphic Support:

Printing & storage of .PCX, .BMP format, SATO Hex/binary

Software:

Windows® Drivers (Windows® 95, 98, ME, NT4.0, 2000, XP)
"Label Gallery Free" - Label Software
Printer Utilities

Electrical Requirements:

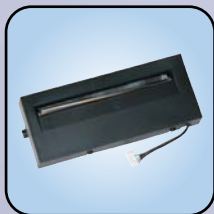
100-120VAC/200-240VAC, 50/60 Hz (± 1%)
Agency Certifications: CE, UL, CSA, TÜV

Environmental Requirements:

Operating: 40° to 100°F (4° to 38°C)
30-80% RH, non-condensing
Storage: -4° to 122°F (-20° to 50°C)
Max. 85% RH, non-condensing
ESD: 8kV

Optional Features:

Label Cutter (factory installed), Label Dispenser (factory installed), 220 V Power Supply, External USB, External Ethernet, Memory Expansion, Rewinder, Keyboard



Cutter



Label Gallery



Keyboard



RWG500 Rewinder

SATO
DCS & Labeling Worldwide

SATO America, Inc.

10350-A Nations Ford Road, Charlotte, NC 28273
Phone: (704) 644-1650 Fax: (704) 644-1659
E-mail: satosales@satoamerica.com

www.satoamerica.com